

**To all customers and users of  
Dräger monitor holders with AC2000  
spring-loaded arm  
- Ceiling-mounted installation -**

May 2015

## **Important Safety Notice!!!**

**Dräger ceiling-mounted installations with monitor holder  
- the monitor can fall down if the monitor holder breaks  
- this problem concerns Ondal AC 2000 spring-loaded arms shipped in 2005 and  
2006 (G93358 and G93359)**

Dear Madam/Sir,

Within the framework of our worldwide product surveillance activities we have been informed about another case where a welded seam in a spring-loaded arm of a monitor holder broke despite the actions we initiated in February 2014. The monitor is then at risk of falling, and in the best case scenario – depending on the weight – would be caught in the cables running along the spring-loaded arm. Although no injury was reported, a risk of injury to persons positioned beneath the monitor cannot be excluded.

The safety notice mentioned above from spring 2014 does not state clearly enough that the serial number includes a date. Therefore, many serial numbers were not identified as being affected.

Example:

0111 085 12312

**08** refers to August as the month of manufacture and **5** refers to the year of manufacture 2005

*(Explanation: Seen simply as a number, 0111 085 xxxxx is above the serial number that was defined as limit 0111 066 xxxxx, but seen as a date (085 = August 2005) the product was manufactured before 066 = June 2006 and is therefore affected.)*

Dräger Medical GmbH  
Moislinger Allee 53-55  
23558 Lübeck, Germany  
Mailing address:  
23542 Lübeck, Germany  
Tel. +49 451 882-0  
Fax +49 451 882-2080  
info@draeger.com

Bank details:  
Commerzbank AG, Lübeck  
Account no. 014 679 500  
Bank code no. 230 400 22  
IBAN DE15 2304 0022 0014 6795 00  
SWIFT code COBADEFF230

Sparkasse zu Lübeck  
Account no. 1 071 117  
Bank code no. 230 501 01  
IBAN DE15 2305 0101 0001 0711 17  
SWIFT code NOLADE21SPL

Company Headquarters: Lübeck  
Commercial register:  
Municipal Court Lübeck HRB 4358 HL

Chairman of the Supervisory Board:  
Professor Dr. Nikolaus Schweickart

Board of Managing Directors:  
Stefan Dräger (Chairman)  
Andreas Frahm  
Gert-Hartwig Lescow  
Anton Schrofner

HYPERLINK  
"http://www.draeger.com"

This notice refers to the following spring-loaded arms that must be replaced:

Part number	Designation	Serial numbers affected
G93358	Spring-loaded arm 2 displays 13.5-21 MO SD	all 0111 <b>065</b> xxxxx all 0111 <b>075</b> xxxxx
and	and	all 0111 <b>085</b> xxxxx all 0111 <b>095</b> xxxxx
G93359	Spring-loaded arm 1 display 7-12 MO SD	all 0111 <b>105</b> xxxxx all 0111 <b>115</b> xxxxx all 0111 <b>125</b> xxxxx

We would therefore like to ask again for your cooperation in helping us locate and deal with the remaining affected spring-loaded arms:

- Please use the attachment (figures, part and serial numbers) to check your ceiling-mounted installations and identify the affected "AC2000" spring-loaded arms.
- Please inform your Dräger representative so that a free replacement of the spring-loaded arm can be arranged for you.
- Please inform your staff that monitors in the affected installations must not be positioned above persons and that monitors must be moved with care (e.g. holding the monitor in both hands while moving it) until the replacement has been carried out. In particular, monitors should not be positioned with considerable force – the stress on the lower joint of the spring-loaded arm should be as low as possible.

We would like to apologize for any inconvenience this measure may cause but believe it is essential in the interests of patient and user safety.

If you have any further questions, please contact your local Dräger representative.

Dräger Medical GmbH  
Key Application Field  
Infrastructure Projects

  
Dr. V. Prapavat

Attachment:

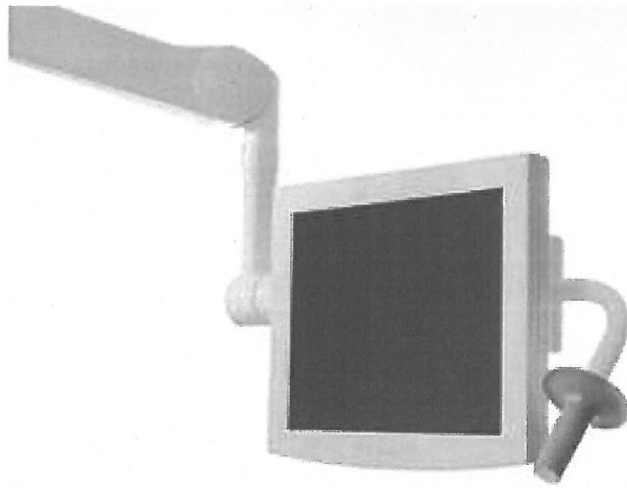
Figures to identify and verify the part and serial numbers

List of part and serial numbers affected

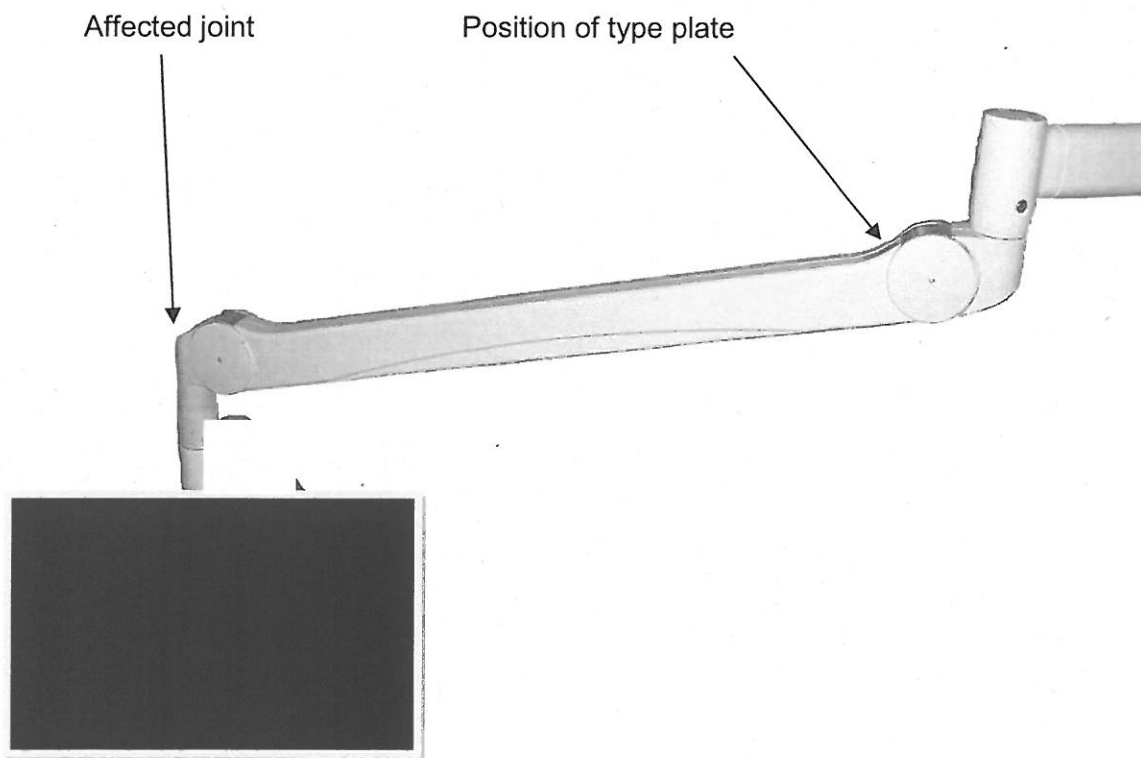
**ATTACHMENT FOR VERIFICATION:**

**Example of an affected installation:**

Monitor with AC2000 spring-loaded arm

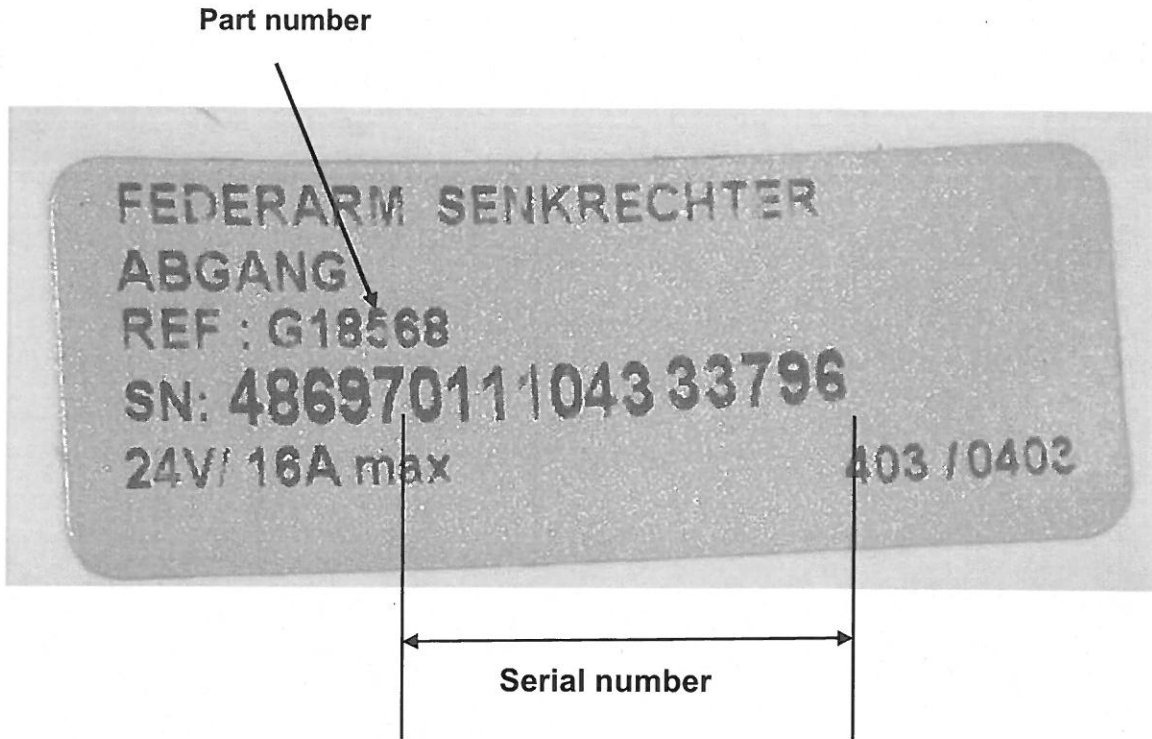


**Identification of affected installations and/or spring-loaded arms:**



**How to verify the part and serial number of the spring-loaded arm:**

The manufacturer's serial number is located on the upper side of the spring-loaded arm near the **upper joint** (in this example showing part number **G18568**):



List of affected part and serial numbers

Part number	Designation	Affected serial numbers
G93358	Spring-loaded arm 2 displays 13,5-21 MO SD	all 0111 <b>065</b> xxxxx all 0111 <b>075</b> xxxxx
and	and	all 0111 <b>085</b> xxxxx all 0111 <b>095</b> xxxxx
G93359	Spring-loaded arm 1 display 7-12 MO SD	all 0111 <b>105</b> xxxxx all 0111 <b>115</b> xxxxx all 0111 <b>125</b> xxxxx